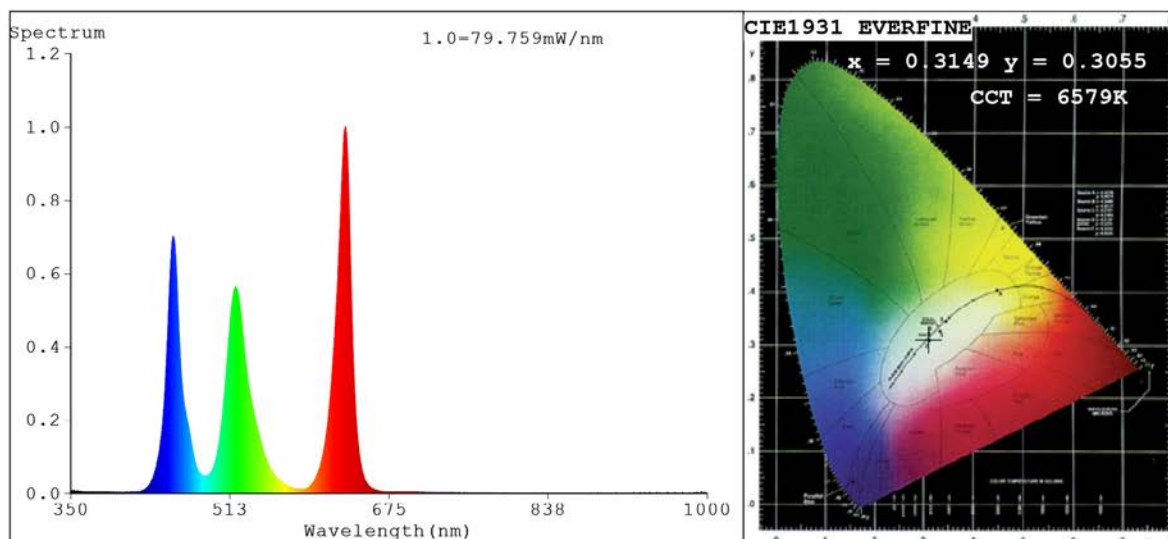


Spectrum Test Report



Color Parameters:

Chromaticity Coordinate: $x=0.3149$ $y=0.3055$ $u'=0.2087$ $v'=0.4555$
 CCT=6579K (Duv=-0.0106) Dominant WL:Ld =464.1nm Purity=9.4%
 Ratio:R=29.5% G=65.4% B=5.1%;;Peak WL:Lp=630.6nm FWHM=15.9nm
 Render Index:Ra=29.5 CRI=28.2 TM30:Rf=42 Rg=130
 R1 =0 R2 =63 R3 =63 R4 =0 R5 =16 R6 =48 R7 =47
 R8 =0 R9 =0 R10=14 R11=0 R12=59 R13=14 R14=72 R15=0

Photo Parameters:

Flux = 1044 lm Eff. : 68.17 lm/W Fe = 4.089 W

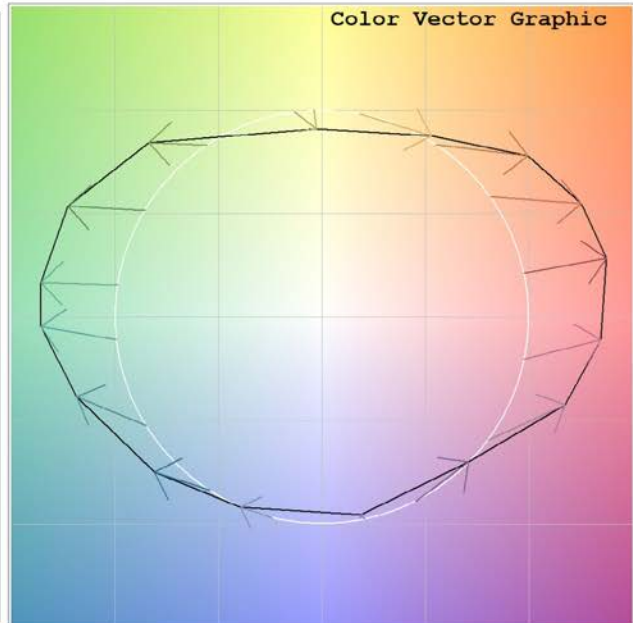
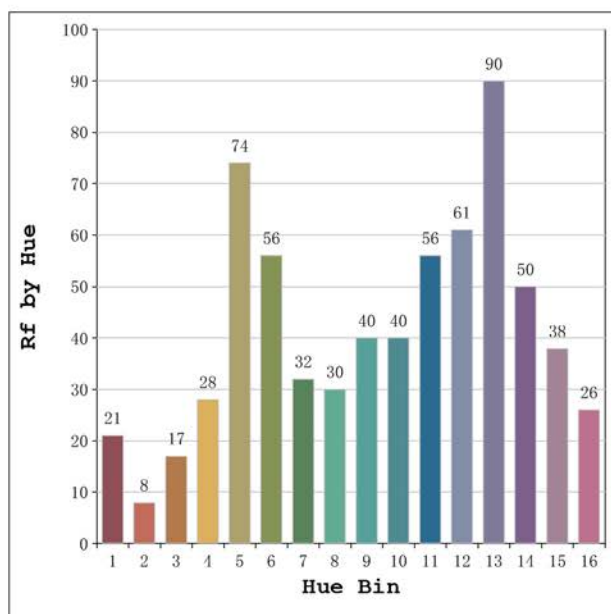
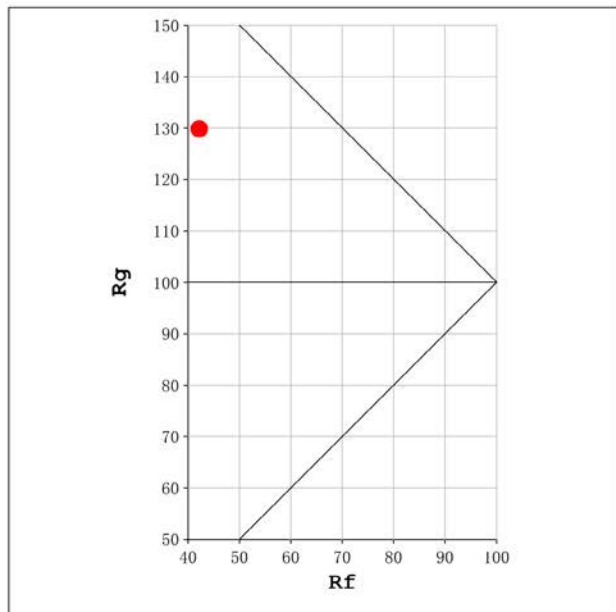
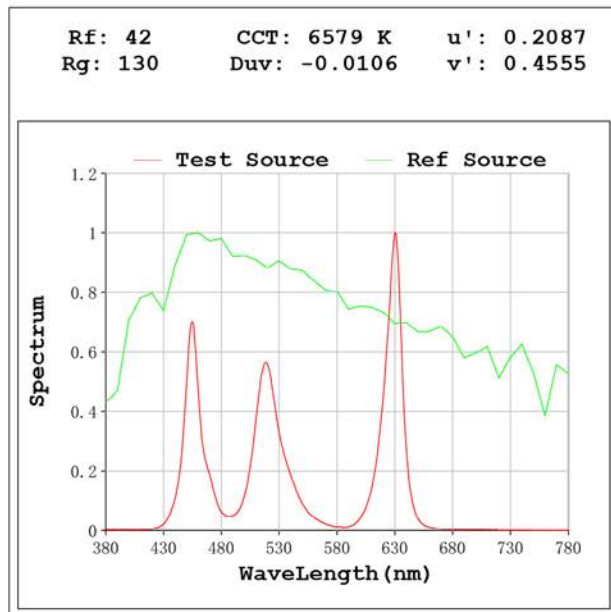
Electrical parameters:

V = 23.998 V I = 0.6381 A P = 15.31 W PF = 1.000

Status: Integral T = 360 ms Ip = 49794 (76%)

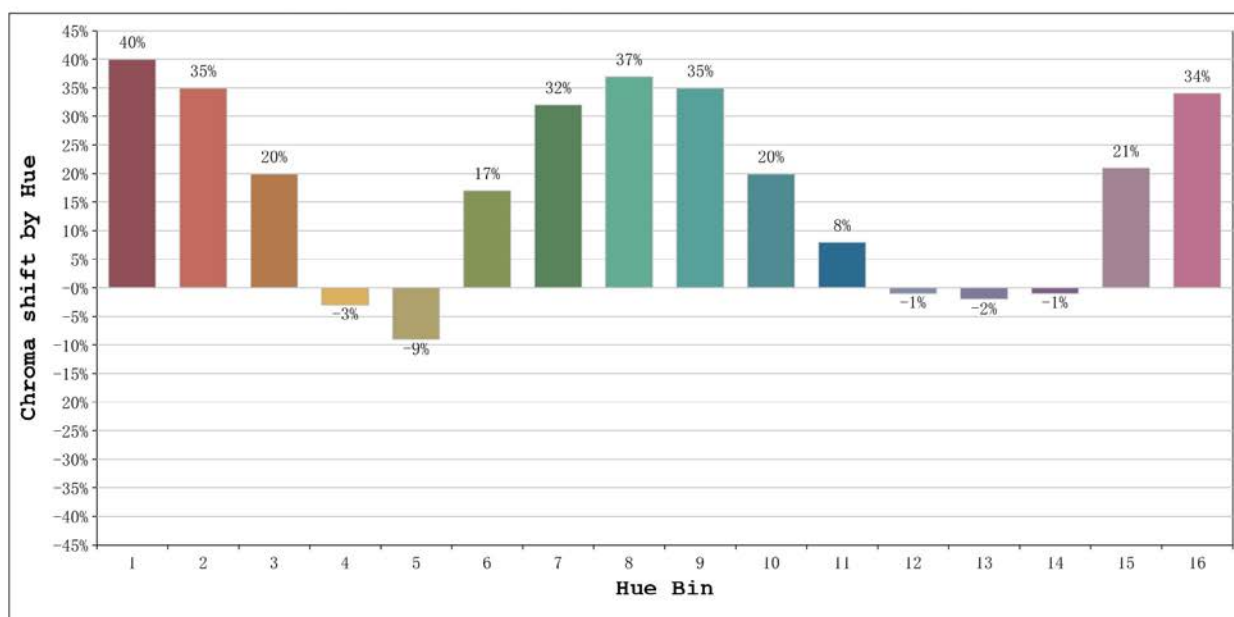
Model:Ecoled COB RGB
 Tester:Sergio Carneros
 Temperature:20Deg
 Manufacturer:Luz Negra

Number: 31.156
 Date:2025-02-13 07:55:40
 Humidity:50%
 Remarks:100cm de tira flexible



Model:Ecoled COB RGB
 Tester:Sergio Carneros
 Temperature:20Deg
 Manufacturer:Luz Negra

Number: 31.156
 Date:2025-02-13 07:55:40
 Humidity:50%
 Remarks:100cm de tira flexible



			Graphic shift(%)	
Hue Bin	Hue Angle	Rf	Chroma	Hue
1	0.0° - 22.5°	21	40	0
2	22.5° - 45.0°	8	35	-26
3	45.0° - 67.5°	17	20	-39
4	67.5° - 90.0°	28	-3	-35
5	90.0° - 112.5°	74	-9	-8
6	112.5° - 135.0°	56	17	23
7	135.0° - 157.5°	32	32	19
8	157.5° - 180.0°	30	37	6
9	180.0° - 202.5°	40	35	-12
10	202.5° - 225.0°	40	20	-29
11	225.0° - 247.5°	56	8	-26
12	247.5° - 270.0°	61	-1	-15
13	270.0° - 292.5°	90	-2	0
14	292.5° - 315.0°	50	-1	32
15	315.0° - 337.5°	38	21	34
16	337.5° - 360.0°	26	34	16

Model:Ecoled COB RGB
 Tester:Sergio Carneros
 Temperature:20Deg
 Manufacturer:Luz Negra

Number: 31.156
 Date:2025-02-13 07:55:40
 Humidity:50%
 Remarks:100cm de tira flexible